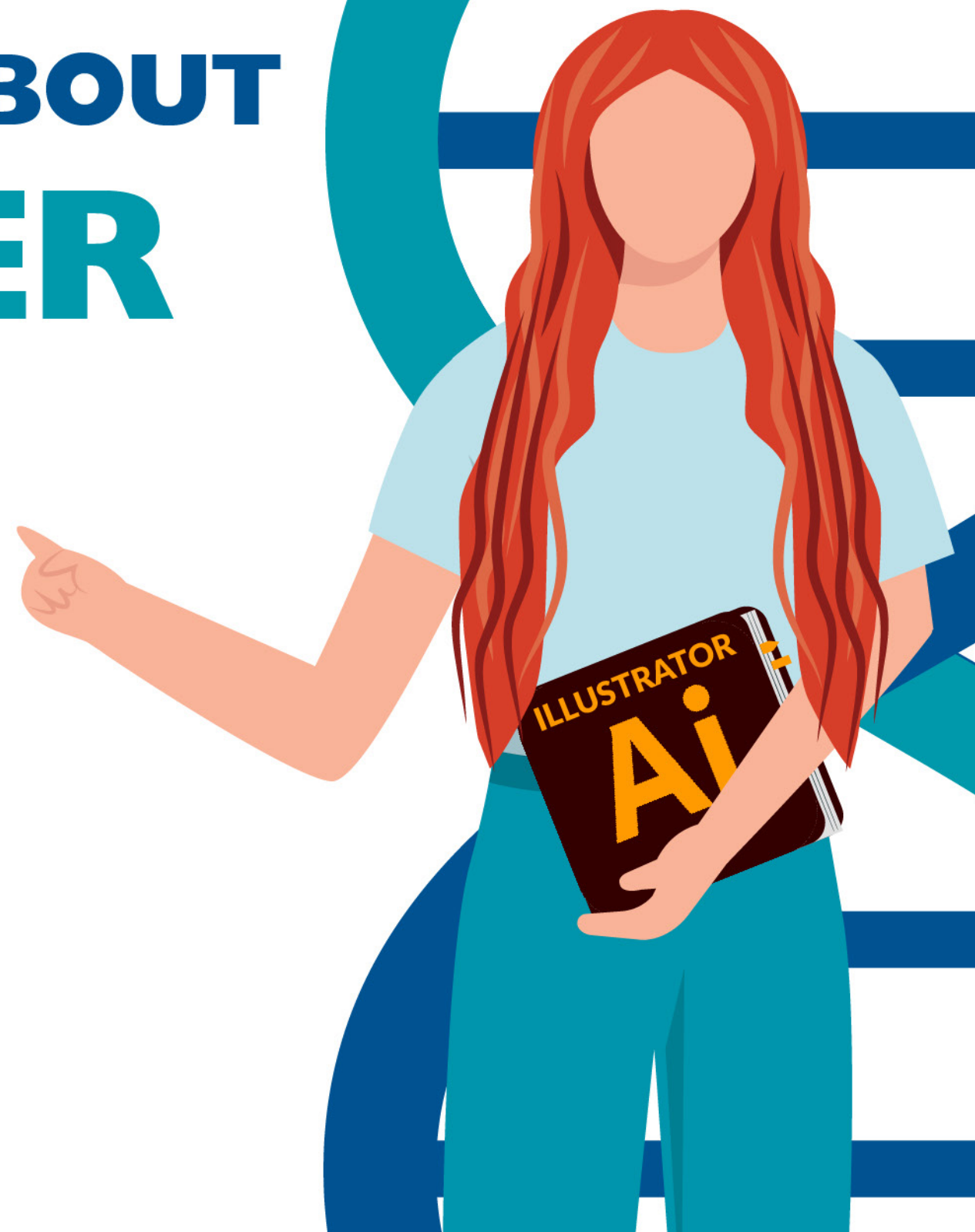
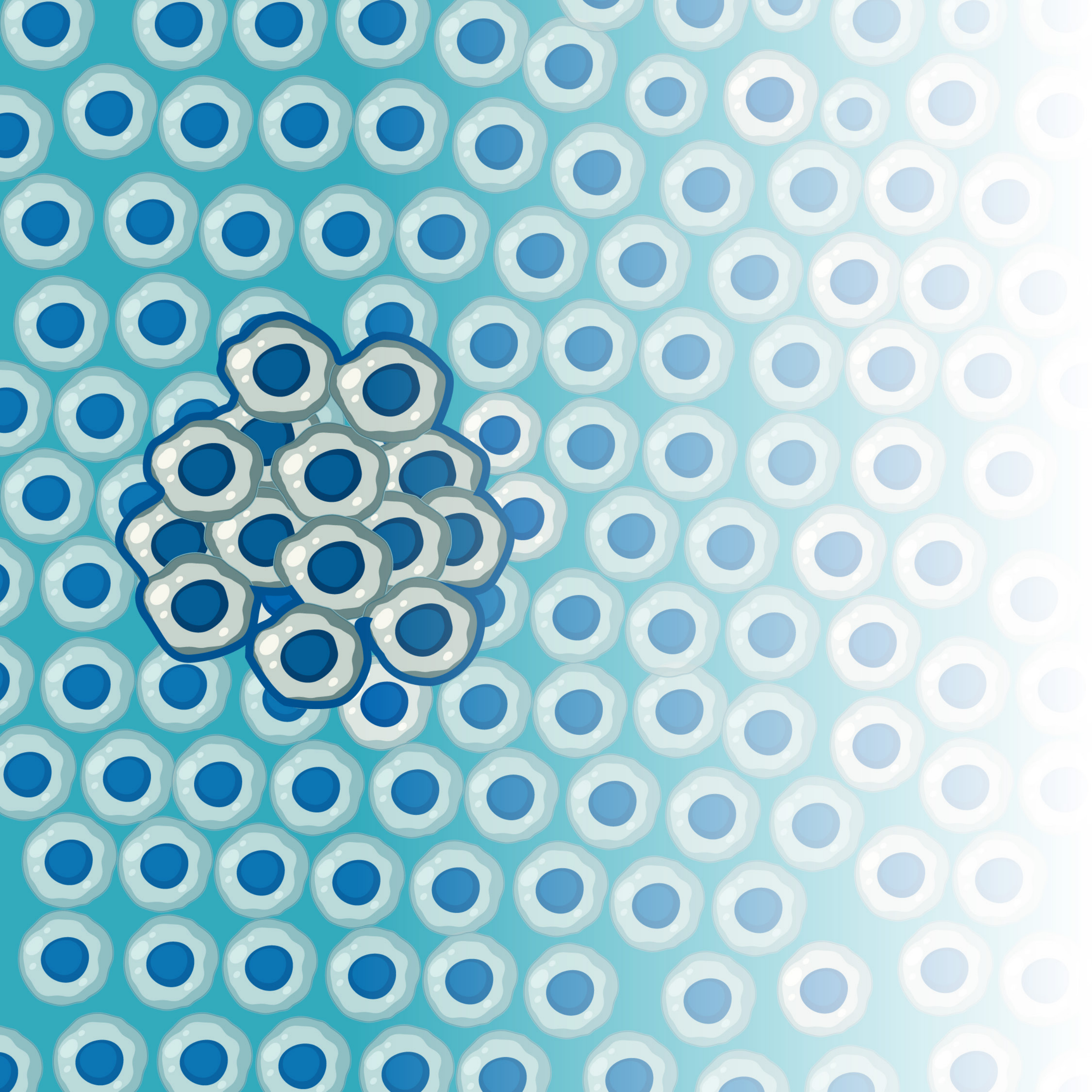




MEDICOVER
GENETICS

WEB'S MOST FREQUENTLY ASKED QUESTIONS ABOUT CANCER





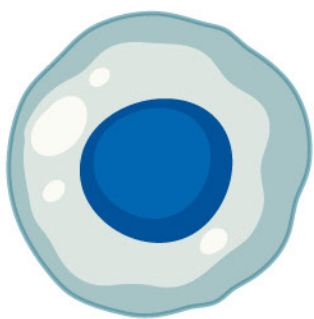
What is cancer?

Cancer is a disease in which the cancerous cells in our body start to divide and grow uncontrollably.

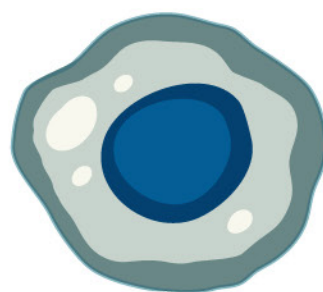
This results in the formation of a mass, known as a tumor.

In 2020, about 18.1 million people were diagnosed with cancer*

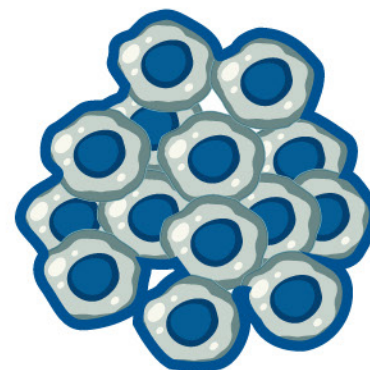
Healthy Cells



Cancerous Cells



Tumor



* Worldwide cancer data: World Cancer Research Fund International. Available from: <https://www.wcrf.org/cancer-trends/worldwide-cancer-data/> Accessed 29 Jan. 2024

What are the most common types of cancer worldwide?

The most common types of cancer are:

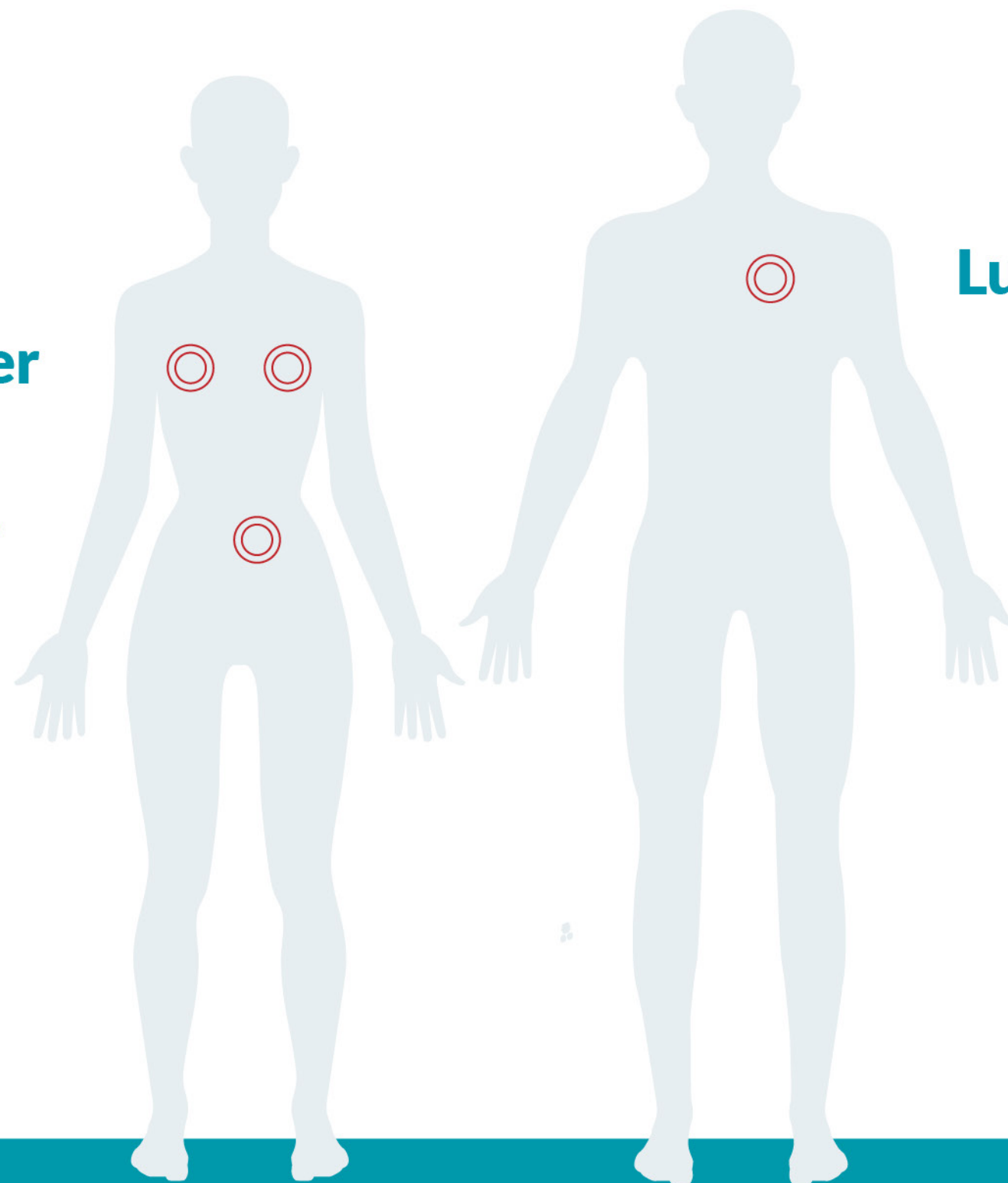
Breast cancer:
2.26 million people

Lung cancer:
2.21 million people

Colorectal cancer:
1.93 million people

Breast cancer

Colorectal cancer



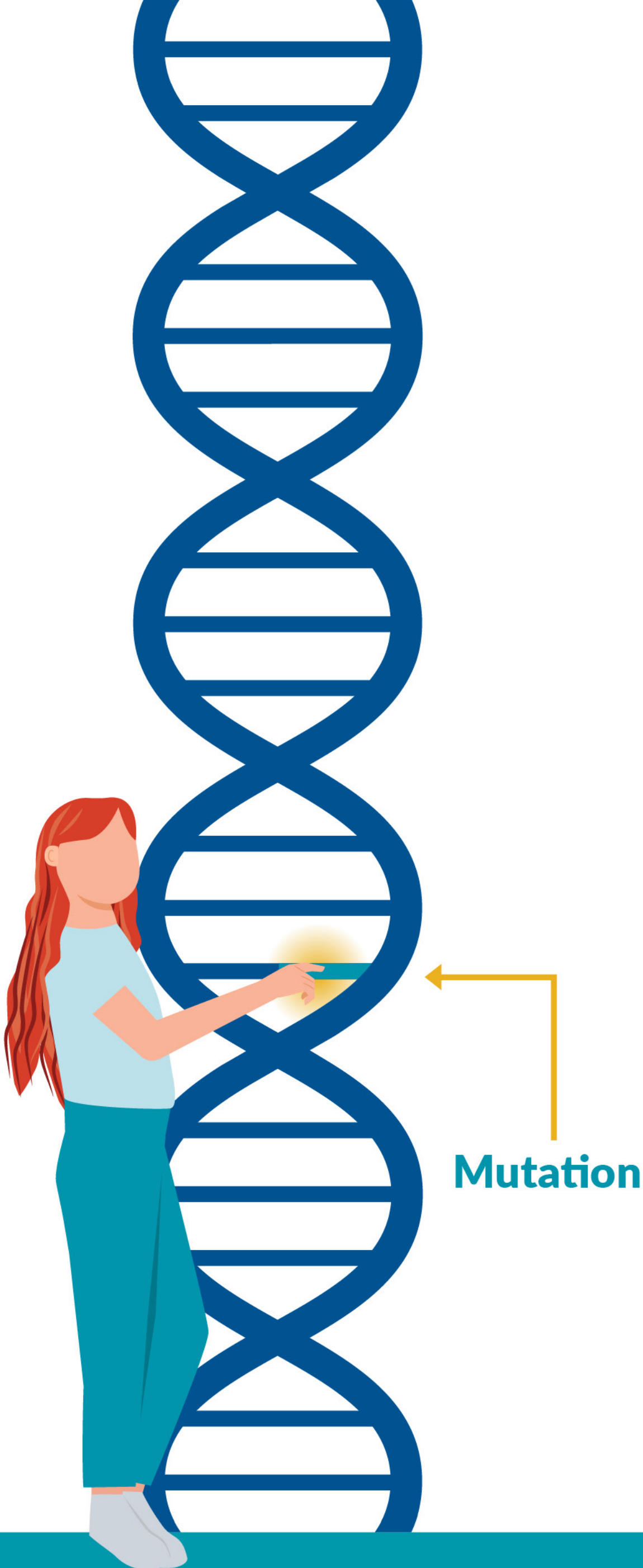
Lung cancer

Statistics are for 2020

What causes cancer?

Cancer is caused when the DNA in the healthy cells in our body acquire a genetic change known as mutation. The DNA change will then cause the transformation of healthy cells into cancerous.

There are different risk factors that lead to cancer development.



How do you get cancer?

Some of the risk factors include:



Smoking



Excessive alcohol intake



Unhealthy diet and nutrition



Obesity



Aging



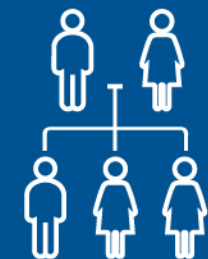
Pathogenic viruses



Exposure to UV radiation from the sun



Exposure to carcinogenic chemicals



Personal or family history of cancer

How many stages of cancer are there?

The stages of cancer range from 0-4:

Stage 0:

The cancer has started in an organ but hasn't spread.

Usually, some cancers are easy to treat at this stage and can be easily detected by routine screenings.

Stage 1:

The cancer is small and hasn't spread.

In some cases, stage 1 cancers are highly treatable.

Stage 2:

The cancer is growing but still hasn't spread.

Early diagnosis can increase the chances of successful treatment for different types of cancers.

Stage 3:

The size of the cancer becomes larger and may have started spreading to nearby tissues.

Some cancers can be successfully treated but monitoring is necessary.

Stage 4:

The cancer becomes malignant and spreads to nearby and distant organs through metastasis.

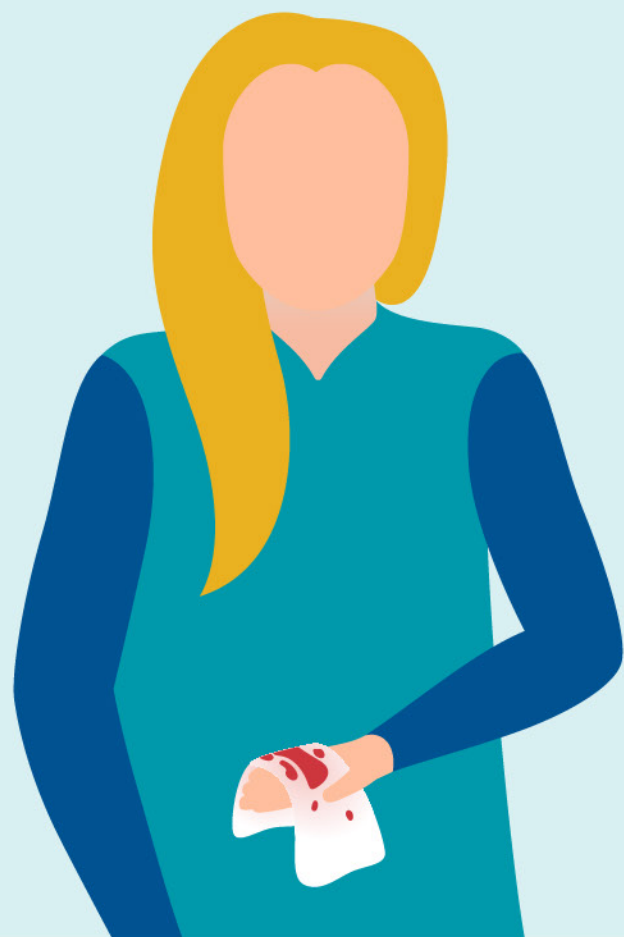
Early treatment might help improve overall survival and quality of life.

What are the symptoms of cancer?

There are many different symptoms, depending on the type of cancer. In general, examples of symptoms include:

- coughing
- weight loss
- unusual pain
- unusual bleeding
- lumps anywhere in the body







MEDICOVER
G E N E T I C S

For more information on Medicover Genetics
Oncology Portfolio please visit our website:
www.medicover-genetics.com

or send an email to:
info.genetics@medicover.com



Follow us on:
in f @